

# PRODUCT INFORMATION PACKET

Model No: 215TTWWD16006  
Catalog No: N664A  
15/10,3600/3000,TEFC,215TC,3/60/50/230/460# 190/380  
General Purpose



Regal and Marathon are trademarks of Regal Beloit Corporation or one of its affiliated companies.  
©2018 Regal Beloit Corporation, All Rights Reserved. MC017097E

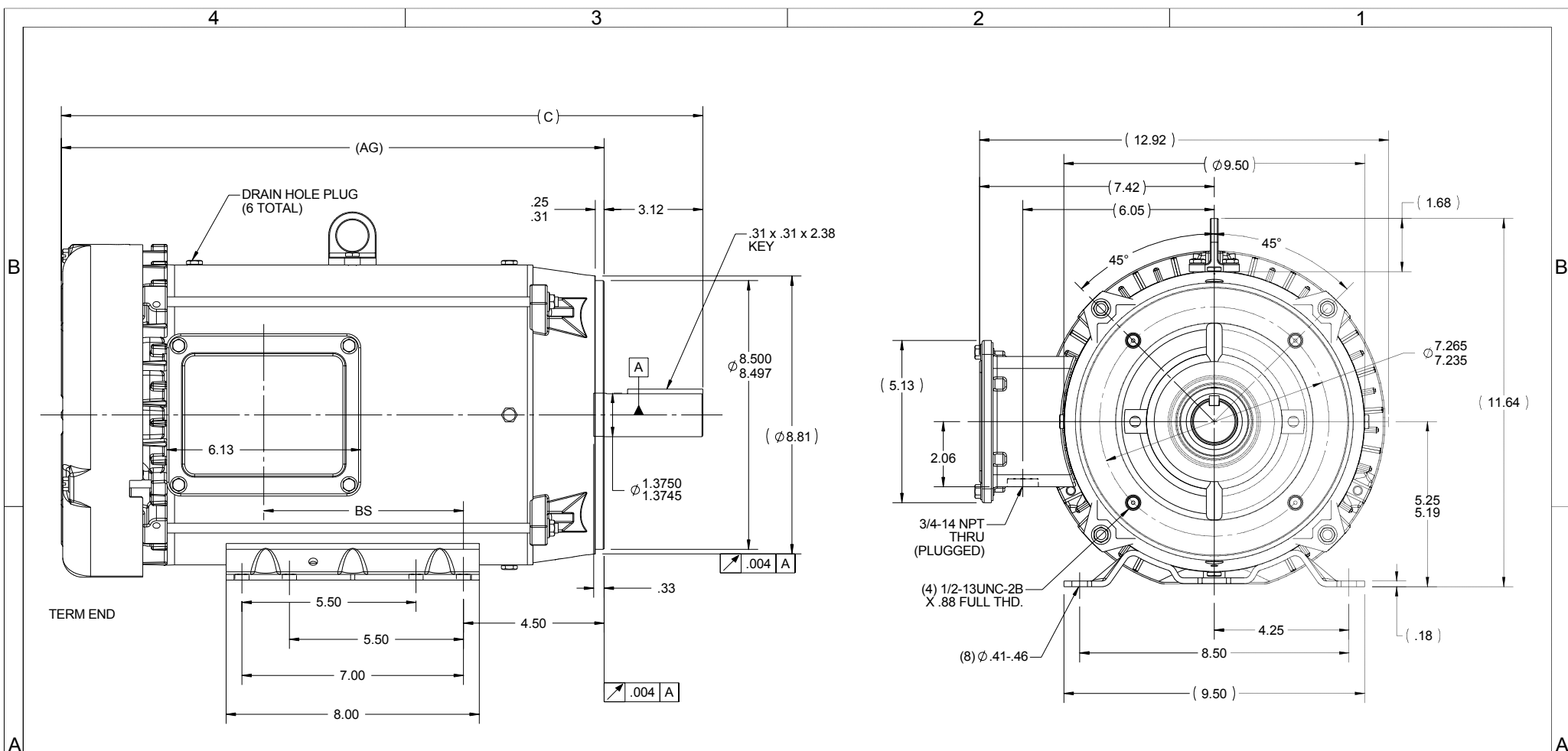


### Nameplate Specifications

Output HP	<b>15 Hp</b>	Output KW	<b>11.2 kW</b>
Frequency	<b>60 Hz</b>	Voltage	<b>230/460 V</b>
Current	<b>35.0/17.6 A</b>	Speed	<b>3495 rpm</b>
Service Factor	<b>1.15</b>	Phase	<b>3</b>
Efficiency	<b>91 %</b>	Duty	<b>Continuous</b>
Insulation Class	<b>F</b>	Design Code	<b>B</b>
KVA Code	<b>G</b>	Frame	<b>215TC</b>
Enclosure	<b>Totally Enclosed Fan Cooled</b>	Overload Protector	<b>No</b>
Ambient Temperature	<b>40 °C</b>	Drive End Bearing Size	<b>6309</b>
Opp Drive End Bearing Size	<b>6206</b>	UL	<b>Recognized</b>
CSA	<b>Y</b>	CE	<b>Y</b>
IP Code	<b>43</b>		

### Technical Specifications

Electrical Type	<b>Squirrel Cage Inverter Rated</b>	Starting Method	<b>Line Or Inverter</b>
Poles	<b>2</b>	Rotation	<b>Reversible</b>
Mounting	<b>Round</b>	Motor Orientation	<b>HORIZONTAL</b>
Drive End Bearing	<b>BALL</b>	Opp Drive End Bearing	<b>BALL</b>
Frame Material	<b>Rolled Steel</b>	Shaft Type	<b>T</b>
Overall Length	<b>20.96 in</b>	Frame Length	<b>11.15 in</b>
Shaft Diameter	<b>1.375 in</b>	Shaft Extension	<b>3.42 in</b>
Assembly/Box Mounting	<b>F1/F2 CAPABLE</b>		
Outline Drawing	<b>038033-1115</b>	Connection Diagram	<b>005010.01</b>



NOTES:

- 1- NAMEPLATE TO BE READ FROM C'BOX SIDE OF MOTOR.  
DASH 965 TO BE READ FROM OPPOSITE SHAFT END
- 2- C'BOX CAN BE MOUNTED ON OPPOSITE SIDE BY REMOVING  
BRACKETS AND TURNING FRAME 180 DEGREES (EXCEPT AS NOTED).

ORACLE REV  
001

DASH	FRAME	C	BS	AG	MOUNTING
965	213T	18.77	4.82	15.65	
1115	213/15T	20.27	6.32	17.15	
1240	215T	21.52	7.57	18.40	F1 ONLY

DRAWING REVISION B	REVISION BY SAJID	DATE 08/25/15
ECO ECO-0084019	APPROVED BY JD	DATE 08/25/15
ECO DESCRIPTION FAN GUARD UPDATED		
<small>COPYRIGHT REGAL BELOIT AMERICA, INC. ALL RIGHTS RESERVED.                  PROPRIETARY AND CONFIDENTIAL INFORMATION - THIS DOCUMENT IS THE PROPERTY OF                  REGAL BELOIT AMERICA, INC. ("OWNER") AND CONTAINS OWNER'S PROPRIETARY                  INFORMATION. ANY PERSON, CORPORATION OR OTHER FIRM RECEIVING IT IS DEEMED,                  BY RECEIVING IT, TO AGREE THAT IT, AND/OR ANY PART OF IT, SHALL NOT BE DISCLOSED                  TO ANY PERSON, CORPORATION OR OTHER ENTITY, DUPLICATED, AND/OR USED, EXCEPT                  AS EXPRESSLY APPROVED IN WRITING IN ADVANCE BY OWNER. THIS DOCUMENT SHALL                  BE RETURNED TO OWNER UPON REQUEST. IT MAY BE SUBJECT TO CERTAIN                  RESTRICTIONS UNDER APPLICABLE EXPORT CONTROL LAWS AND REGULATIONS.</small>		

TOLERANCES UNLESS OTHERWISE SPECIFIED:			
DEC.	INCH	mm	ANGLE
-X	+0.1	[+2.5]	±0.5°
-XX	+0.03	[+0.76]	
-XXX	+0.005	[±0.127]	
-XXXX	+0.0005	[±0.0127]	
REMOVE BURRS & BREAK SHARP			
EDGES: .003/.015 [0.076/.381] X 45°			
CORNER FILLETS: R.02 [51]			
MACHINED SURFACES: 125/3.2			
mm SHOWN IN [BRACKETS]			

DRAWN BY SS	DATE 08/20/15
APPROVED BY JD	DATE 08/20/15
REFERENCE	THIRD ANGLE PROJECTION

Regal Beloit America, Inc.	
DESCRIPTION <b>OUTLINE</b> WASHDOWN 210FR-TEFC-C-FACE-3PH	
MATERIAL	PROCESS/FINISH
SIZE B	DRAWING NUMBER 038033
	SHEET 1 OF 1

005010-01

VIEW FROM OUTSIDE OF MOTOR AT SWITCH END.



VOLTAGE	L1	L2	L3	JOIN & INSULATE
HIGH	T1	T2	T3	(T4,T7) (T5,T8) (T6,T9)
LOW	T1,T7	T2,T8	T3,T9	T4,T5,T6

				TOLERANCES UNLESS SPECIFIED		<b>REGAL</b> ™ <b>Regal Beloit America, Inc.</b>		DRAWN RDW 04/12/02		
				DEC.	INCHES			CHK		
				.X	±.1			APPD		
				.XX	±.01			SCALE 1=1		
				.XXX	±.005	TITLE		REF FIG.2-51		
A	UPDATED TO REGAL LOGO	SAJ 06/26/15	AJY	.XXXX	±.0005	MAT'L.		FMF		
NO.	REVISION	BY & DATE	CHK	ANG	±1/2"	FINISH		PREV		
THIS DRAWING IN DESIGN AND DETAIL IS OUR PROPERTY AND MUST NOT BE USED EXCEPT IN CONNECTION WITH OUR WORK ALL RIGHTS OF DESIGN AND INVENTION ARE RESERVED THIS IS AN ELECTRONICALLY GENERATED DOCUMENT - DO NOT SCALE THIS PRINT				RFP	04/12/02	CAD FILE		SIZE	DRAWING NO.	REV.
				DIST	BRF-NLV	00501001		A	005010-01	A



P.O. BOX 8003  
WAUSAU, WI 54401-8003  
PH. 715-675-3311

DATA VOLTS: 460

CERTIFICATION DATA SHEET

CUSTOMER P.O. #:   
 ORDER #: 00501001 REFERENCE MODEL #: 215TTWWD16006  
 CONN. DIAGRAM: S98634-1115 CAT #: N664A  
 OUTLINE: K2132128 NONE 1 CUSTOMER PART #:   
 WINDING: MOUNTING: F1/F2 CAPABLE  
 SPEED:   
 TYPICAL MOTOR PERFORMANCE DATA

HP	KW	SYNC RPM	FL RPM	FRAME	ENCLOSURE	TYPE	KVA CODE	DESIGN
15	11.2	3600	3495	215TC	TEFC	TFW	G	B

PH	HZ	VOLTS	AMPS	START TYPE	DUTY	INSL	S.F.	AMB	ELEV.
3	60/50	230/460#190/380	35/17.6&28.4/14.2	LINE OR INVERTER	CONT	F	1.15	40	3300
	F.L. EFF	91.0	3/4 LD EFF	90.7	1/2 LD EFF	90.6	GTD EFF	ELECT. TYPE	
	F.L. PF	89.0	3/4 LD PF	86.3	1/2 LD PF	79.1	89.5	SO CAGE INV BATED	

F.L. TORQUE	LR AMPS @ 460 V	L.R. TORQUE	B.D. TORQUE	F.L. RISE (°C)
22.5 LB-FT	109	42.8 LB-FT	190%	61.8 LB-FT
@ 3 FT.	POWER	ROTOR WK <sup>2</sup>	MAX. LOAD WK <sup>2</sup>	SAFE STALL TIME
72 DBA	81 DBA	0.75 LB-FT <sup>2</sup>	18 LB-FT <sup>2</sup>	15 SEC.
				START/SHOUR
				2
				MOTOR WGT
				128 LB.

\*\*\* SUPPLEMENTAL INFORMATION \*\*\*

DE BRACKET TYPE	ODE BRACKET TYPE	MOUNT TYPE	MOTOR ORIENTATION	SEVERE DUTY	HAZARDOUS LOCATION	DRIP COVER	SCREENS	PAINT
C-FACE	STANDARD	ROUND	HORIZONTAL	NO	NONE	NO	NONE	HTE - LEESSON(EPO)

BEARINGS	GREASE	SHAFT TYPE	SPECIAL DE	SPECIAL ODE	SHAFT MATERIAL	FRAME MATERIAL
DE BALL 6309	POLYREX EM	T	NONE	NONE	303 STAINLESS (C-501)	ROLLED STEEL

THERMOSTATS	PROTECTORS	WDG RTD's	BRG RTD's	THERMISTORS	CONTROL	SPACE HEATERS
NONE	NOT	NONE	NONE	NONE	FALSE	NA

R1 (ohms/ph)	R2 (ohms/ph)	X1 (ohms/ph)	X2 (ohms/ph)	Xm (ohms/ph)	VIBRATION (in/sec)	FLOAT
0.397	0.295	1.334	1.249	45.171	0.150	ODE

* N		INVERTER TORQUE: VARIABLE 10:1	
O		INV. HP SPEED RANGE: NONE	
T		ENCODER: NONE	
E		NONE	
S		BRAKE: NONE	
		NONE	
		FT-LB: NA	
		VOLTAGE: NONE	
		HZ:	

PREPARED BY: FAREEDA DUDEKULA  
 DATE: 9/17/2018  
 FORM: 3531 REV 4 2/27/06  
 UL: V-INS, CONST UL REC

Data Sheet

215TTWWD16006



Submital  
Data @ 460 V

Date: 9/17/2018

Customer: \_\_\_\_\_  
Attention: \_\_\_\_\_

Submitted by: FAREEDA DUDEKULA

Motor Load Data

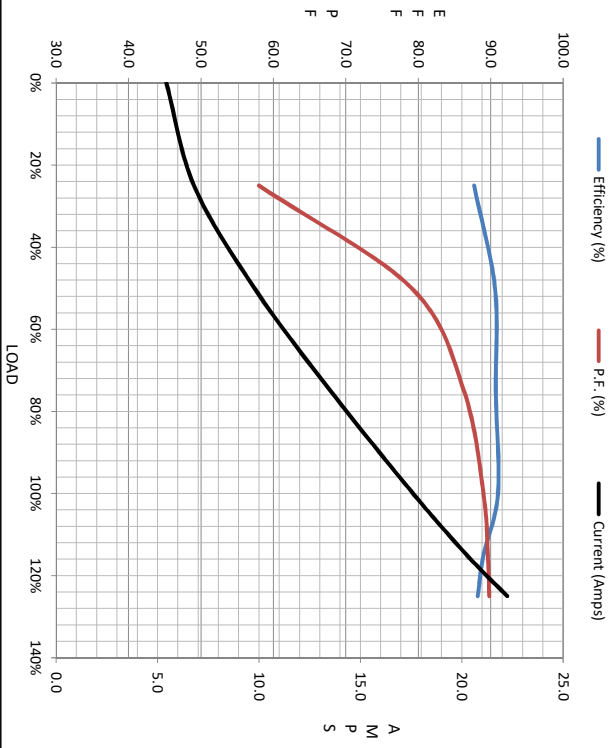
Load	0%	25%	50%	75%	100%	115%	125%	LR
Current (Amps)	5.4	6.8	9.8	13.5	17.6	20.3	22.2	109
Torque (ft-lb)	0.00	5.5	11.1	16.9	22.5	26.1	28.6	42.8
RPM	3600	3576	3552	3524	3495	3475	3461	0
Efficiency (%)		87.7	90.6	90.7	91.0	89.0	88.2	
P.F. (%)	18.2	58.0	79.1	86.3	89.0	89.6	89.8	45.6

Motor Speed Data

	LR	Pull-Up	BD	Rated	Idle
Speed (RPM)	0	632	3120	3495	3600
Current (Amps)	109	111	70.5	17.6	5.4
Torque (ft-lb)	42.8	42.7	61.8	22.5	0.00

Information Block

HP	15.0				
Sync. RPM	3600				
Frame	215182TFC080				
Enclosure	TEFC				
Construction	TFW				
Voltage	230/460#190/380 V				
Frequency	60 Hz				
Design	A				
LR Code letter	G				
Service Factor	1.15				
Temp Rise @ FL	80 °C				
Duty	CONT				
Ambient	40 °C				
Elevation	1,000 feet				
Motor/Shaft wk <sup>2</sup>	0.75 Lb-Ft <sup>2</sup>				
Ret Wdg	K2132128 NONE				
Sound Pressure @ 1M	72 dbA				
VFD Rating	VARIABLE 10:1				
Outline Dwg	SS86834-1115				
Conn. Diag	00501001				
Additional Specifications:					
0					
0					
	EQUIV CKT (OHMS / PHASE)				
	R1	R2	X1	X2	Xm
	0.3970	0.2950	1.3340	1.2490	45.1710



Speed - Torque Curve

